

“Planning, Production and Policy :
Increasing housing supply in
Haitian American CDC target Areas”

June 12,2015

By Lynda Charles

Deputy Director, HACDC

HACDC HOUSING PROGRAMS



Education

Counseling

Closing

Why Housing?

Asset Building

- Savings
- Equity

Healthy Community

- Sense of Ownership
- Safety

Quality Of Life

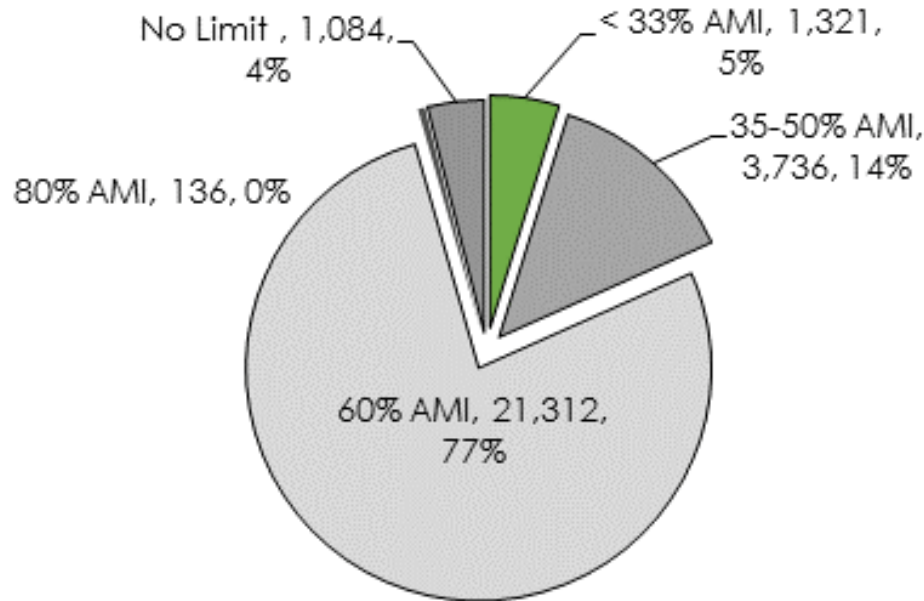
- Better School
- Better infrastructure

SHORTAGE OF AFFORDABLE UNITS IN MIAMI DADE COUNTY (MDC)

- 0-30% 33 units available and affordable for every 100 ELI renters
- 0-50% 38 units available and affordable for every 100 VLI Renters
- 0-80% 49 units available and affordable for every 100 LI Renters

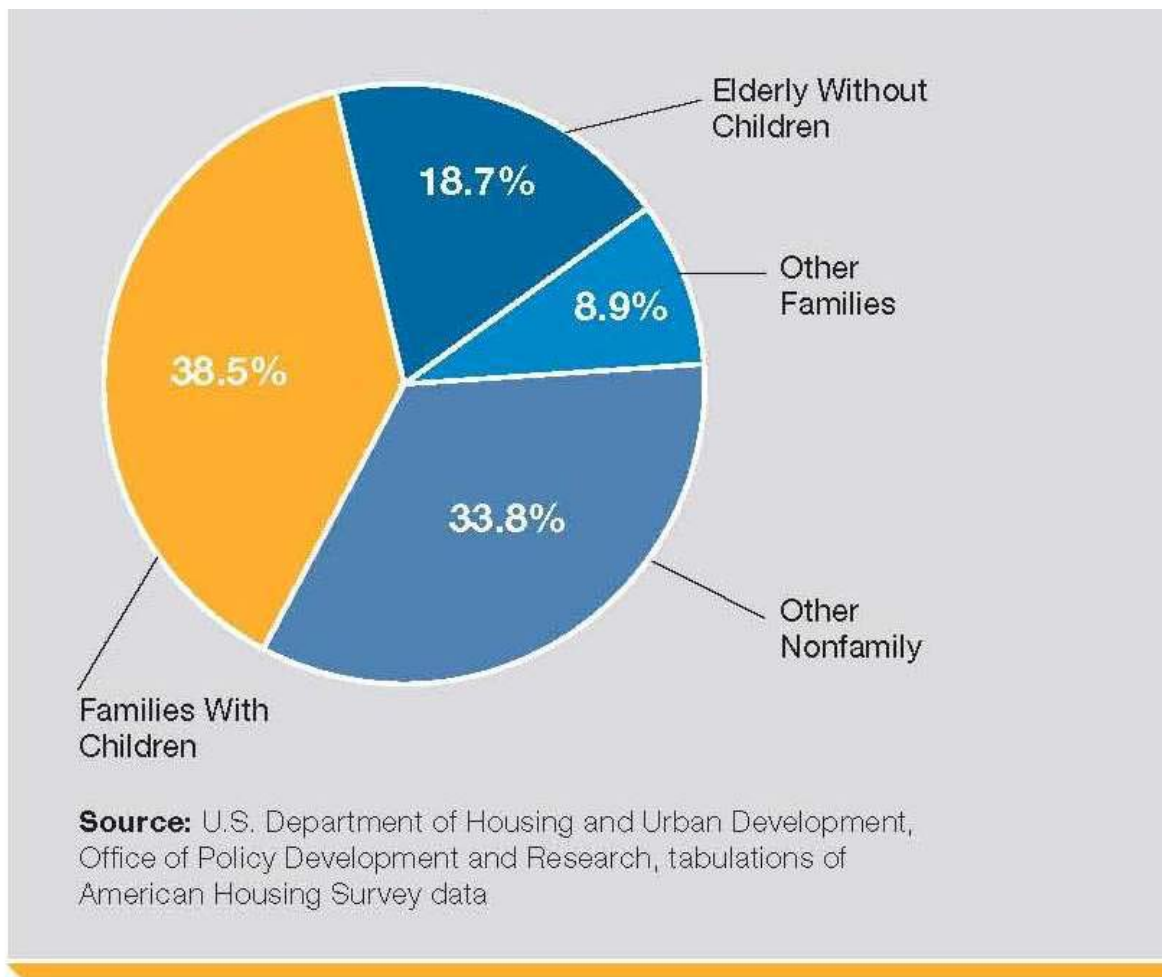
Sources: Shimberg Center for Housing Studies

INVENTORY OF UNITS FINANCED WITH LIHTC MIAMI DADE COUNTY



Sources: Research by Jorge De La Paz, Senior Associate, Miami Homeless Coalition

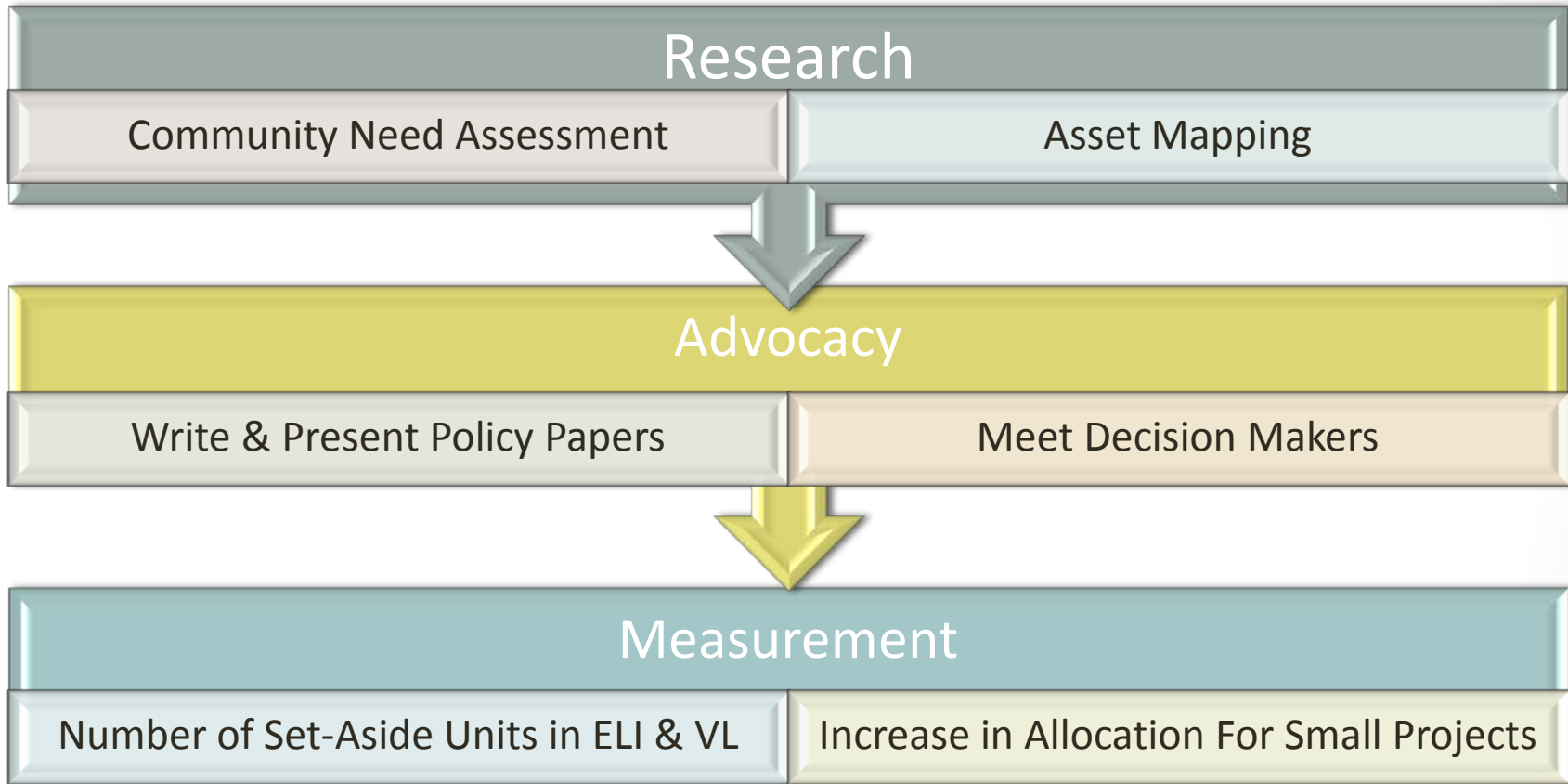
Share of Worst Case Needs by Household Type, 2009



Using HACDC as a platform to use the 3 PS to increase inventory for households earning 50% and below

- PLANNING
- POLICY
- PRODUCTION

ACTION PLAN



CHALLENGES

- Limited predevelopment funds and construction funds for smaller developer
- Higher costs of construction due to lack of economies of scale
- Property management issues in small development

OPPORTUNITIES

- Smaller Developments?
- New Construction Methods?
- Type of Ownership?

CONTACT INFORMATION

- LYNDA CHARLES
Deputy Director
- 786-230-3780